

\$359,000 - 17313 82 Avenue, Edmonton

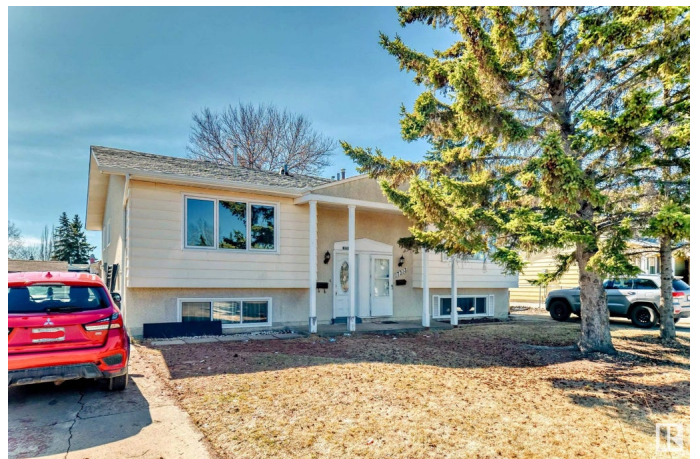
MLS® #E4430213

\$359,000

4 Bedroom, 2.00 Bathroom, 838 sqft
Single Family on 0.00 Acres

Thornccliffe (Edmonton), Edmonton, AB

INVESTORS ALERT!! This 4 spacious bedrooms and 2 bathrooms home is situated in the desirable neighborhood of Thornccliffe with ample street parking, easy access to amenities, parks, public transit, and a short walk to WEST EDMONTON MALL and directly opposite a Playground . This home combines comfort with practicality. The generous layout includes 2 bedrooms, a full size kitchen, large pantry, living room and full bathroom upstairs. While basement has 2 bedroom, second kitchen, family room, full bathroom and laundry ensuring convenience for everyone. A fully fenced expansive backyard, featuring a large deck, fire pit, storage shed and mature treesâ€”ideal for unwinding or hosting outdoor gatherings. This equipped and well maintained home is ideal for first time buyers & investors alike currently fully rented and generates \$2,500 monthly. Don't miss out on this fantastic Edmonton gem!



Built in 1972

Essential Information

MLS® #	E4430213
Price	\$359,000
Bedrooms	4
Bathrooms	2.00
Full Baths	2

Square Footage	838
Acres	0.00
Year Built	1972
Type	Single Family
Sub-Type	Half Duplex
Style	Bi-Level
Status	Active

Community Information

Address	17313 82 Avenue
Area	Edmonton
Subdivision	Thornccliffe (Edmonton)
City	Edmonton
County	ALBERTA
Province	AB
Postal Code	T5T 0K4

Amenities

Amenities	On Street Parking, Deck, Fire Pit
Parking Spaces	2
Parking	Parking Pad Cement/Paved

Interior

Appliances	Dishwasher-Built-In, Dryer, Hood Fan, Oven-Microwave, Storage Shed, Washer, Refrigerators-Two, Stoves-Two
Heating	Forced Air-1, Natural Gas
Stories	2
Has Basement	Yes
Basement	Full, Finished

Exterior

Exterior	Wood, Metal, Stucco
Exterior Features	Fenced, Landscaped, No Back Lane, Playground Nearby, Schools, Shopping Nearby
Roof	Asphalt Shingles
Construction	Wood, Metal, Stucco
Foundation	Concrete Perimeter

Additional Information

Date Listed April 10th, 2025
Days on Market 9
Zoning Zone 20



DATA IS DEEMED RELIABLE BUT IS NOT GUARANTEED ACCURATE BY THE REALTORS® ASSOCIATION OF EDMONTON. COPYRIGHT 2025 BY THE REALTORS® ASSOCIATION OF EDMONTON. ALL RIGHTS RESERVED. Trademarks are owned or controlled by the Canadian Real Estate Association (CREA) and identify real estate professionals who are members of CREA (REALTOR®, REALTORS®) and/or the quality of services they provide (MLS®, Multiple Listing Service®)

Listing information last updated on April 19th, 2025 at 11:32am MDT