

## \$409,000 - 15036 135 St, Edmonton

MLS® #E4429684

### \$409,000

3 Bedroom, 1.50 Bathroom, 1,220 sqft  
Single Family on 0.00 Acres

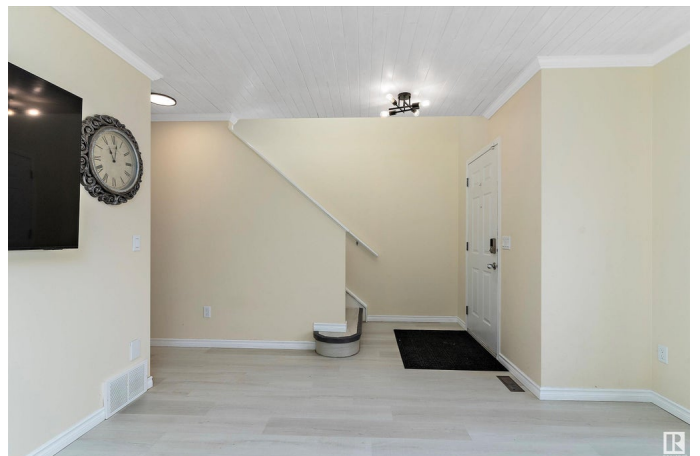
Cumberland, Edmonton, AB

Attention first time home buyer's and Investor's .Welcome to this beautifully updated 3-bedroom, 1.5-bathroom detached home, located on a spacious pie-shaped lot in the desirable community of Cumberland. This property features a double car garage and an expansive deck, perfect for outdoor entertaining. Inside, you'll find stunning new flooring throughout and fresh paint that creates a modern, inviting atmosphere. The kitchen boasts elegant quartz countertops, offering both style and functionality. The basement is fully developed, featuring a spacious rec room for family gatherings or leisure activities. With its generous layout, large lot, and prime location, this home is ideal for families and individuals alike. Don't miss out on the opportunity to own this move-in ready gem in one of Edmonton's sought-after neighborhoods! Samsung TV including wall mount in Living room is perfect gift for buyers.

Built in 2001

### Essential Information

MLS® #	E4429684
Price	\$409,000
Bedrooms	3
Bathrooms	1.50
Full Baths	1



Half Baths	1
Square Footage	1,220
Acres	0.00
Year Built	2001
Type	Single Family
Sub-Type	Detached Single Family
Style	2 Storey
Status	Active

### **Community Information**

Address	15036 135 St
Area	Edmonton
Subdivision	Cumberland
City	Edmonton
County	ALBERTA
Province	AB
Postal Code	T6V 1M9

### **Amenities**

Amenities	On Street Parking, Carbon Monoxide Detectors, Deck, Detectors Smoke, See Remarks
Parking	Double Garage Detached, Rear Drive Access

### **Interior**

Appliances	Dishwasher-Built-In, Dryer, Garage Opener, Refrigerator, Washer, Window Coverings, Stove-Induction, TV Wall Mount
Heating	Forced Air-1, Natural Gas
Stories	2
Has Basement	Yes
Basement	Full, Partially Finished

### **Exterior**

Exterior	Wood, Vinyl
Exterior Features	Back Lane, Backs Onto Park/Trees, Cul-De-Sac, Fenced, Landscaped, Shopping Nearby
Roof	Asphalt Shingles
Construction	Wood, Vinyl
Foundation	Concrete Perimeter

### **Additional Information**

Date Listed April 8th, 2025

Days on Market 11

Zoning Zone 27

DATA IS DEEMED RELIABLE BUT IS NOT GUARANTEED ACCURATE BY THE REALTORS® ASSOCIATION OF EDMONTON. COPYRIGHT 2025 BY THE REALTORS® ASSOCIATION OF EDMONTON. ALL RIGHTS RESERVED. Trademarks are owned or controlled by the Canadian Real Estate Association (CREA) and identify real estate professionals who are members of CREA (REALTOR®, REALTORS®) and/or the quality of services they provide (MLS®, Multiple Listing Service®)

Listing information last updated on April 19th, 2025 at 1:02pm MDT