

\$239,900 - 7077 32 Avenue, Edmonton

MLS® #E4429156

\$239,900

2 Bedroom, 1.50 Bathroom, 1,182 sqft
Condo / Townhouse on 0.00 Acres

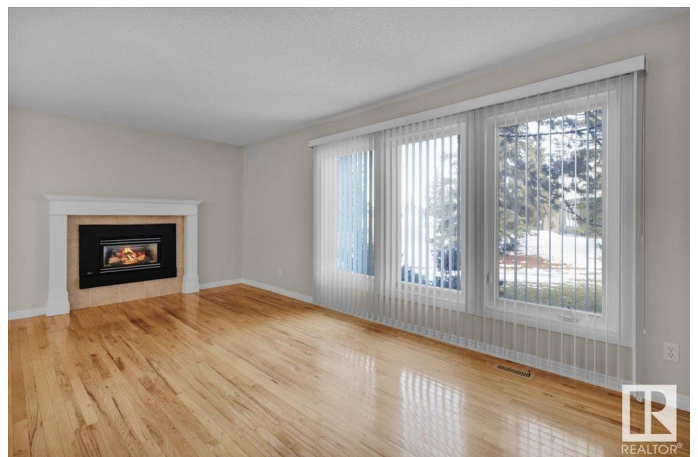
Kameyosek, Edmonton, AB

Terrific end unit tucked away in a quiet complex surrounded by mature trees. Large and private 40 ft wide yard with massive deck. Hard to find double attached garage. Very nicely maintained and updated unit with loads of hardwood flooring, gas fireplace, lots of windows and an unspoiled basement. Original 3 bedroom plan was converted to 2 bedroom but could easily be converted back. Move in ready. Shows extremely well and priced to sell! Close to LRT, Grey Nuns Hospital, Shopping and Schools. For more details please visit the REALTOR® Website.

Built in 1976

Essential Information

MLS® #	E4429156
Price	\$239,900
Bedrooms	2
Bathrooms	1.50
Full Baths	1
Half Baths	1
Square Footage	1,182
Acres	0.00
Year Built	1976
Type	Condo / Townhouse
Sub-Type	Townhouse
Style	2 Storey



Status	Active
--------	--------

Community Information

Address	7077 32 Avenue
Area	Edmonton
Subdivision	Kameyosek
City	Edmonton
County	ALBERTA
Province	AB
Postal Code	T6K 2K9

Amenities

Amenities	Deck, Detectors Smoke
Parking Spaces	2
Parking	Double Garage Attached

Interior

Appliances	Dishwasher-Built-In, Dryer, Garage Control, Garage Opener, Microwave Hood Fan, Refrigerator, Stove-Electric, Washer
Heating	Forced Air-1, Natural Gas
Fireplace	Yes
Fireplaces	Mantel
Stories	2
Has Basement	Yes
Basement	Full, Unfinished

Exterior

Exterior	Wood
Exterior Features	Backs Onto Park/Trees, Fenced, Landscaped, Playground Nearby, Public Transportation, Schools, Shopping Nearby
Roof	Asphalt Shingles
Construction	Wood
Foundation	Concrete Perimeter

School Information

Elementary	Kameyosek/St. Elizabeth
Middle	Edith Rogers/St. Hilda
High	J.Percy/Holy Trinity

Additional Information

Date Listed	April 4th, 2025
Days on Market	15
Zoning	Zone 29
Condo Fee	\$600

DATA IS DEEMED RELIABLE BUT IS NOT GUARANTEED ACCURATE BY THE REALTORS® ASSOCIATION OF EDMONTON. COPYRIGHT 2025 BY THE REALTORS® ASSOCIATION OF EDMONTON. ALL RIGHTS RESERVED. Trademarks are owned or controlled by the Canadian Real Estate Association (CREA) and identify real estate professionals who are members of CREA (REALTOR®, REALTORS®) and/or the quality of services they provide (MLS®, Multiple Listing Service®)

Listing information last updated on April 19th, 2025 at 1:17pm MDT