

Courtesy Of Gurpinder Jutla Of MaxWell Polaris

## \$369,000 - 14822 104 Avenue, Edmonton

MLS® #E4422675

**\$369,000**

3 Bedroom, 1.00 Bathroom, 1,076 sqft  
Single Family on 0.00 Acres

Grovenor, Edmonton, AB

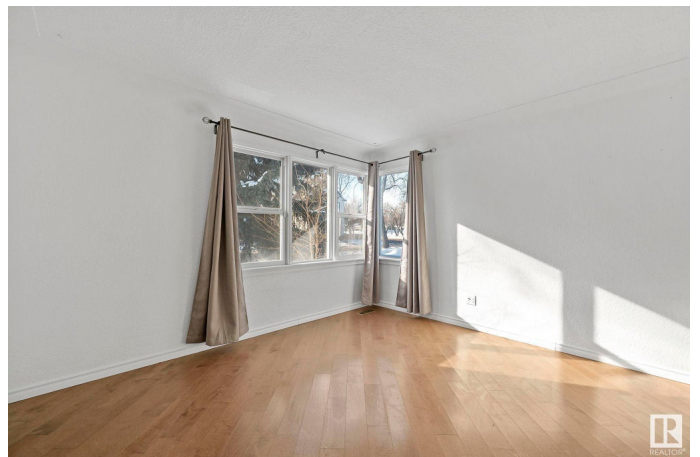
Prime Location, Great Investment Property for Infill or first time buyer Opportunity in Grovenor Gem! Discover the property you've been waiting for, situated in a central, mature neighbourhood. It's close to the River Valley & Ravine, and features excellent schools and shops nearby. Recent upgrades include stunning hardwood and ceramic tile flooring, new carpet, enhanced upper-level insulation and drywall, and a beautifully renovated kitchen with granite countertops.

Built in 1950

### Essential Information

MLS® #	E4422675
Price	\$369,000
Bedrooms	3
Bathrooms	1.00
Full Baths	1
Square Footage	1,076
Acres	0.00
Year Built	1950
Type	Single Family
Sub-Type	Detached Single Family
Style	1 and Half Storey
Status	Active

### Community Information



Address	14822 104 Avenue
Area	Edmonton
Subdivision	Grovenor
City	Edmonton
County	ALBERTA
Province	AB
Postal Code	T5N 0X7

### **Amenities**

Amenities	Deck
Parking	Double Garage Detached

### **Interior**

Appliances	Refrigerator, Stove-Electric
Heating	Forced Air-1, Natural Gas
Stories	2
Has Basement	Yes
Basement	Full, Partially Finished

### **Exterior**

Exterior	Wood, Vinyl
Exterior Features	Back Lane, Landscaped, Playground Nearby, Public Transportation, Schools
Roof	Asphalt Shingles
Construction	Wood, Vinyl
Foundation	Concrete Perimeter

### **Additional Information**

Date Listed	February 24th, 2025
Days on Market	18
Zoning	Zone 21

DATA IS DEEMED RELIABLE BUT IS NOT GUARANTEED ACCURATE BY THE REALTORS® ASSOCIATION OF EDMONTON. COPYRIGHT 2025 BY THE REALTORS® ASSOCIATION OF EDMONTON. ALL RIGHTS RESERVED. Trademarks are owned or controlled by the Canadian Real Estate Association (CREA) and identify real estate professionals who are members of CREA (REALTOR®, REALTORS®) and/or the quality of services they provide (MLS®, Multiple Listing Service®)

Listing information last updated on March 14th, 2025 at 7:02am MDT