

Courtesy Of Manny Agunbiade Of MaxWell Polaris

\$193,000 - 1418 9363 Simpson Drive, Edmonton

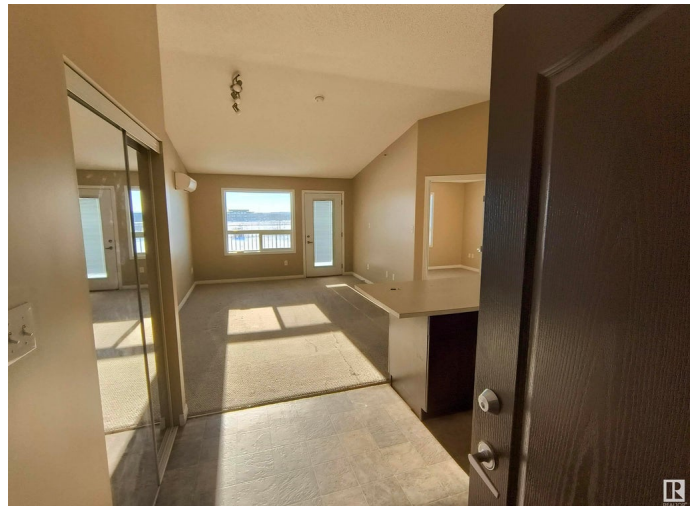
MLS® #E4421780

\$193,000

2 Bedroom, 2.00 Bathroom, 843 sqft
Condo / Townhouse on 0.00 Acres

South Terwillegar, Edmonton, AB

This stunning top-floor 2-bedroom, 2-bathroom condo offers vaulted ceilings, in-floor heating, air conditioning, in-suite laundry/storage, and two titled energized parking stalls in a bright and spacious layout flooded with natural light. The modern open-concept kitchen features espresso cabinetry with under-cabinet lighting, stainless steel appliances, and a large island with seating, making it perfect for entertaining. The primary suite boasts a walk-through closet and 4-piece ensuite, while the second bedroom is conveniently located near the second full bathroom. Enjoy relaxing on the large balcony, ideal for a patio set and BBQ. This meticulously maintained unit also includes building amenities such as an exercise room, guest suite, and secure entry. Located within walking distance to shops, restaurants, and amenities, with quick access to Anthony Henday, Windermere Centre, Terwillegar Rec Centre, schools, and scenic walking trails. Quick possession available!



Built in 2008

Essential Information

MLS® #	E4421780
Price	\$193,000
Bedrooms	2
Bathrooms	2.00

Full Baths	2
Square Footage	843
Acres	0.00
Year Built	2008
Type	Condo / Townhouse
Sub-Type	Lowrise Apartment
Style	Multi Level Apartment
Status	Active

Community Information

Address	1418 9363 Simpson Drive
Area	Edmonton
Subdivision	South Terwillegar
City	Edmonton
County	ALBERTA
Province	AB
Postal Code	T6R 0N2

Amenities

Amenities	Air Conditioner, Detectors Smoke, Exercise Room, Intercom, No Animal Home, No Smoking Home, Parking-Plug-Ins, Parking-Visitor, Security Door
Parking	2 Outdoor Stalls

Interior

Interior Features	ensuite bathroom
Appliances	Air Conditioner-Window, Dishwasher-Built-In, Oven-Microwave, Refrigerator, Stacked Washer/Dryer, Stove-Electric
Heating	In Floor Heat System, Natural Gas
# of Stories	4
Stories	4
Has Basement	Yes
Basement	None, No Basement

Exterior

Exterior	Wood, Stone, Vinyl
Exterior Features	Landscaped, Playground Nearby, Public Transportation, Shopping Nearby
Roof	Asphalt Shingles

Construction Wood, Stone, Vinyl
Foundation Concrete Perimeter

Additional Information

Date Listed February 15th, 2025
Days on Market 27
Zoning Zone 14
Condo Fee \$578



DATA IS DEEMED RELIABLE BUT IS NOT GUARANTEED ACCURATE BY THE REALTORS® ASSOCIATION OF EDMONTON. COPYRIGHT 2025 BY THE REALTORS® ASSOCIATION OF EDMONTON. ALL RIGHTS RESERVED. Trademarks are owned or controlled by the Canadian Real Estate Association (CREA) and identify real estate professionals who are members of CREA (REALTOR®, REALTORS®) and/or the quality of services they provide (MLS®, Multiple Listing Service®)

Listing information last updated on March 14th, 2025 at 2:47pm MDT