

Courtesy Of Fadi Georgi and Megan Benoit Of MaxWell Polaris

\$739,900 - 3651 8 Street, Edmonton

MLS® #E4420485

\$739,900

5 Bedroom, 3.50 Bathroom, 2,867 sqft
Single Family on 0.00 Acres

Maple Crest, Edmonton, AB

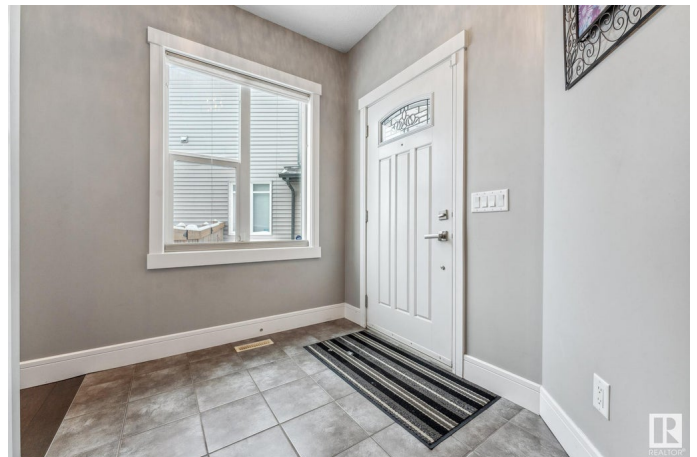
Nestled in a cul-de-sac, this Custom Home sits on a pie-shaped lot with heaps of privacy. The home greets you in an entry with a grand curved staircase. The Great Room has 9-foot ceilings, hardwood floors, & gas fireplace creating a cozy atmosphere. The Gourmet Kitchen boasts highend Maple cabinetry, a large island, granite countertops in a Brown hue, walk-thru butler's pantry (features extra fridge/sink) leads to a mudroom & garage- perfect for families. Upstairs the home offers 3 bedrooms; the Master retreat with a walk-in closet and spa-like 5-piece ensuite bath, two bedrooms ideal for children/guests, top-floor laundry room and 18' x 15' family room. The completed basement is for versatile living, featuring an office, family room an exercise area, a 4th bedroom, and a luxurious 4-piece bathroom with heated floors. Step outside to enjoy the three-tier deck with 2 gas hook-ups, perfect for entertaining. This private oasis overlooks landscaped yard with garden beds. Air conditioning, central vac included

Built in 2014

Essential Information

MLS® # E4420485

Price \$739,900



Bedrooms	5
Bathrooms	3.50
Full Baths	3
Half Baths	1
Square Footage	2,867
Acres	0.00
Year Built	2014
Type	Single Family
Sub-Type	Detached Single Family
Style	2 Storey
Status	Active

Community Information

Address	3651 8 Street
Area	Edmonton
Subdivision	Maple Crest
City	Edmonton
County	ALBERTA
Province	AB
Postal Code	T6T 0S4

Amenities

Amenities	Deck, See Remarks
Parking Spaces	4
Parking	Double Garage Attached

Interior

Interior Features	ensuite bathroom
Appliances	Air Conditioning-Central, Dishwasher-Built-In, Dryer, Garage Opener, Microwave Hood Fan, Refrigerator, Stove-Electric, Washer, Window Coverings
Heating	Forced Air-1, Natural Gas
Fireplace	Yes
Fireplaces	Mantel, Tile Surround
Stories	3
Has Basement	Yes
Basement	Full, Finished

Exterior

Exterior	Wood, Brick, Vinyl
Exterior Features	Airport Nearby, Fenced, Landscaped, Playground Nearby, Public Swimming Pool, Public Transportation, Schools, Shopping Nearby, See Remarks
Roof	Asphalt Shingles
Construction	Wood, Brick, Vinyl
Foundation	Concrete Perimeter

Additional Information

Date Listed February 6th, 2025

Days on Market 36

Zoning Zone 30

DATA IS DEEMED RELIABLE BUT IS NOT GUARANTEED ACCURATE BY THE REALTORS® ASSOCIATION OF EDMONTON. COPYRIGHT 2025 BY THE REALTORS® ASSOCIATION OF EDMONTON. ALL RIGHTS RESERVED. Trademarks are owned or controlled by the Canadian Real Estate Association (CREA) and identify real estate professionals who are members of CREA (REALTOR®, REALTORS®) and/or the quality of services they provide (MLS®, Multiple Listing Service®)

Listing information last updated on March 14th, 2025 at 4:02pm MDT